

# Central Champlain Valley CATS Trail Map

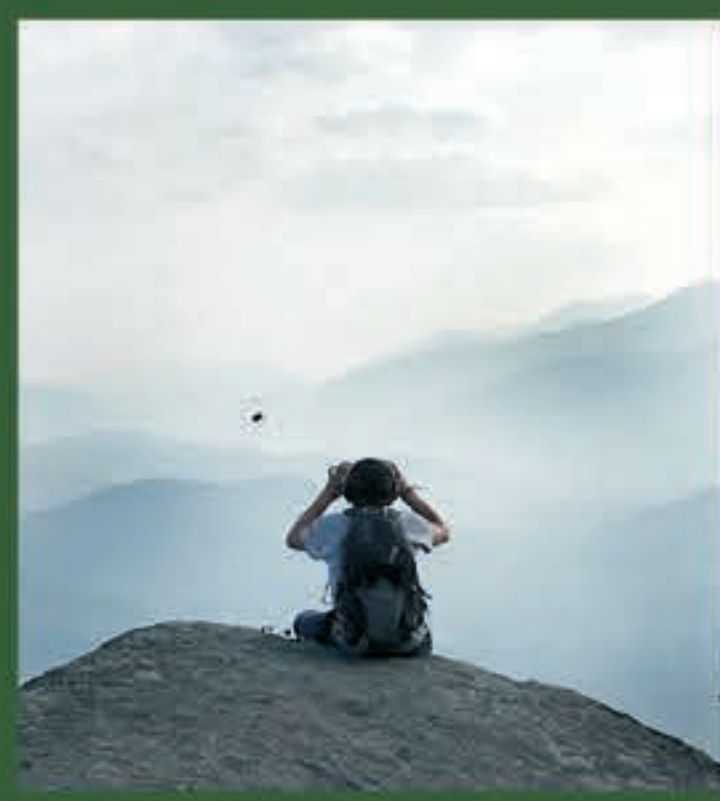


## CHAMPLAIN AREA TRAILS

SAVING LAND MAKING TRAILS

"This world needs many paths into the future and some of the sweetest are on CATS trails."

- Bill McKibben, acclaimed author of *Wandering Home, A Walk Through the Champlain Valley* and other books.



### Join us!

Hike, volunteer, and contribute to save land and make trails

Box 193, 6482 Main Street  
Westport, NY 12993  
518-962-CATS (2287)  
info@champlainareatrails.com  
www.champlainareatrails.com

trail map printed 2023 ©2023 Champlain Area Trails

The Central Champlain Valley features a scenic landscape of forests, farms, fields, wetlands, and historic hamlets nestled in the Adirondack foothills with beautiful views of Lake Champlain, the Adirondack High Peaks, and the Green Mountains of Vermont.

Champlain Area Trails (CATS) creates trails that link communities, connect people to nature, and promote economic vitality. Please enjoy the trails and our wonderful landscape and support local businesses.

CATS invites you to get out on the trails and share the vision of New York's Champlain Valley where productive forests and farms surround vibrant hamlets and people hike, snowshoe, and ski on a network of public trails.

You will go through woods and meadows with easy to moderate hills and great views. Bring family and friends together for pleasant walks. And for those seeking solitude, enjoy peaceful moments on our trails.

CATS saves land by working with partners through our Champlain Valley Conservation Partnership Program to protect natural habitat, farms, clean water, and scenic vistas that people enjoy on the trails.

Champlain Area Trails are available year-round for everyone. You can hike, ski, and snowshoe the trails or bike on country roads - then visit the valley's hamlets for food, drink, lodging, and more.

- Hiking Trails
- Roads
- Seasonal Road okay for Hiking & Biking
- Wetlands
- Bike Trails
- Canoe/Kayak locations
- Firetower
- Campground
- NY State Land
- Empire State Trail



Champlain Area Trails also publishes a map of NY's Northern Champlain Valley Trails. To get your free copy, visit our website, or contact us at 518-962-2287 or email info@ChamplainAreaTrails.com

**40th Depot Theatre**  
Take a journey without leaving the station.

6705 Main St Westport, NY (518) 962-4449 depottheatre.org

---

**Champlain National Bank**  
Serving Our Communities Since 1909  
www.champlainbank.com

**Heritage Properties**  
LAUREN MURPHY  
Licensed Real Estate Broker  
7 School Street  
Essex, NY 12936  
PHONE/FAX: 518 962 7876  
www.heritagepropertiesllc.com

**Cornell Cooperative Extension Essex County**  
Cornell Cooperative Extension puts knowledge to work in pursuit of economic vitality, ecological sustainability and social well-being.

essex.cce.cornell.edu  
518-962-4810 / essex@cornell.edu  
8487 U.S. Route 9, Lewis, NY 12950

**The Adirondack's Handcrafted Energy Bar**  
**DAK BAR**  
Whole Food Energy  
Fuel your passion. Live your adventure.

**CHAMPLAIN AREA TRAILS**

Thank you to the landowners with CATS trails on their properties and to all the donors, grant makers, business sponsors, volunteers, and hikers.

Funding for this map is provided by CATS Donors and the New York State Health Foundation.

2 Champlain Area Trails (CATS) is a nonprofit organization. Please become a CATS Donor and help us save land, make trails, connect people with nature, and promote economic vitality. To access our secure, online gift form please scan the QR code or visit our website. The Champlain Valley depends on you!

## CHAMPLAIN AREA TRAILS

**TRAILS**

- easy
- moderate
- difficult

#	trail name	location
A1	Ancient Oak Trail	C2 Willsboro
A2	Art Farm Trail	B2 Essex
A3	Ausable Marsh Trail	B1 Peru
A4	Ausable Chasm Trails	B1 Chesterfield
A5	Ausable Chasm Bike Trails	B1 Chesterfield
A6	Anthony's Nose Trail	B4 Putnam
B1	Bald Peak Trail	A3 Elizabethtown
B2	Bartlett Pond - McConley Rd Tr.	B3 Moriah/Westport
B3	Beaver Bend Trail	C2 Essex
B4	Beaver Flow Trail	C2 Essex
B5	Belfry Mt Trail	B3 Moriah
B6	Black Kettle Trail	C2 Essex
B7	Blueberry Hill Trails	A2 Elizabethtown
B8	Bobcat Trail	B2 Essex
B9	Boquet Mt Trail	C2 Essex
B10	Boquet River Nature Preserve Tr.	C2 Willsboro
B11	Brookfield Headwaters Trail	B2 Essex
B12	Bear Pond Trail	A4 Ticonderoga
B13	Berrymill Pond Trail	A4 Ti/Hague
B14	Bass Lake Trail	A3 North Hudson
B15	Buck Hill Rd	A1 Black Brook
B16	Broughton Ledges Trail	A3 Moriah
C1	Champlain Bridge Trail	C3 Crown Point
C2	Challis Pond Trail	A3 N. Hudson
C3	Clintonville Pine Barrens	A1 Ausable
C4	Cheney Mt Trail	B3 Moriah
C5	Coon Mt Trails	C2 Westport
C6	Coot Hill/Big Hollow Trail	B3 Moriah
C7	Crowfoot Pond Trail	B4 North Hudson
C8	Crown Point Historic Site	C3 Crown Point
C9	Cook Mt Trail	B4 Ticonderoga
C10	Crane Pond Road Trail	A4 Schroon
C11	Clear Pond Trail	A4 Ticonderoga
C12	Crab Pond Trail	A4 Schroon
C13	Connector Trail	B4 Putnam
C14	Cobble Hill Bike Trails	A2 Elizabethtown
D1	DaCy Meadow Farm Trail	B2 Westport
E1	Eagle Mt. Preserve - Benny's Trail	C2 Chesterfield
E2	Essex Gateway Trail	C2 Essex
E3	Essex Quarry Trails	C2 Essex
F1	Field & Forest Trail	B2 Westport/Essex
F2	Florence Hathaway Park Trail	C2 Willsboro
F4	Foothill Trail	C2 Westport
F5	Flying Squirrel Trail	B2 Westport
G1	Goose Pond Trail	A4 Schroon
G2	Grizzle Ocean Trail	A4 Putnam
G3	Gull Bay Trail	A3 N. Hudson
H1	Hammond & Bloody Pond Trail	B2 Westport
H2	Hemlock Hill Trail	B2 Westport
H3	Hidden Quarry Trail	B3 Westport
H4	High Point Trail	C1 Willsboro
H5	Homestead Trail	B2 Essex
L1	Lee Park Trail	B2 Westport
L2	Long Valley Trail	B2 Westport/Essex
L3	LaChute River Walk Trail	A4 Ticonderoga
L4	Long Swing Trail	A4 Schroon
L5	Lost Pond Trail	B4 Ticonderoga
L6	Last Great Shoreline Trail	B4 Putnam
L7	Little Ausable River Trail	B1 Peru
LB	Lonely Hill Trail	B2 Lewis
L9	Long Pond Trail	B1 Willsboro
M1	McAuliffe Rd Trail	C2 Essex/Willsboro
M2	McConley Spring Trail	B3 Moriah
M3	Moose Mt Pond Trail	A3 Schroon
M4	Mountain Spring Rd Trail	B3 Moriah/Westport
M5	Mt Gilligan Trail	A3 Elizabethtown
M6	Mt Defiance Road/Trail	A4 Ticonderoga
M7	Mud Pond / Military Pond Rd Trail	A1 Black Brook
N1	Noblewood Park Trail	C2 Willsboro
N2	North Boquet Summit Trail	C2 Essex
O1	Otis Mt Bike Trails	A2 Elizabethtown
P1	Pauline Murdock Wildlife Trail	A2 Elizabethtown
P2	Penfield Pond Trail	B4 Crown Point
P3	Poke-O-Moonshine Observers' Tr.	B2 Chesterfield
P4	Poke-O-Moonshine Ranger Trail	B1 Chesterfield
P5	Putts Creek Trail	C3 Crown Point
P6	Pharoah Mt. Trail	A4 Schroon
P7	Pharoah Lake Trail	A4 Schroon
P8	Peaked Hill and Pond Trail	A4 Schroon
R1	Rattlesnake Mt Trail	B1 Willsboro
R2	Riverside Trail	C2 Willsboro
R3	Rocky Ledges Trail	C2 Essex
R4	Round Pond Trail	A3 N. Hudson/Moriah
R5	Rock Pond Trail	A4 Ticonderoga
R6	Rogers Rock	B4 Hague
S1	Sophie's Lair Trail	C2 Willsboro
S2	Split Rock Wild Forest Trails	C2 Westport/Essex
S3	Spring Mill Pond Trail	A4 Hague
S4	Sucker Brook Trail	A4 Schroon
S5	Spectacle Pond Trail	A4 Schroon
S6	Short Swing Trail	A4 Schroon
S7	Spirit Sanctuary Trail	C2 Essex
S8	Sherman Trail	B4 Westport
T1	Thrall Dam Park Trail	B2 Lewis
T2	Three Creeks Trail	C2 Essex
T3	Tubmill Mars	A4 Schroon
T4	Treadway Mt. Trail	A4 Ticonderoga
T5	Twin Valleys Trails	B2 Lewis/Essex
V1	Viall's Crossing Trails	B2 Westport
W1	Wadhams Lookout Trail	B2 Westport
W2	Webb Royce Swamp Trail	C2 Essex
W3	Wildway Overlook Trail	B2 Essex
W4	Wildway Passage Loop Trail	C2 Westport
W5	Woods & Swale Trail	B2 Westport
W6	Wickham Marsh Trails	B1 Chesterfield
W7	West Valley Trails	B2 Lewis
W8	Westport Loop	B2 Westport



# Champlain Area Trails Central Valley Trails Map

**Legend**

- Easy
- Moderate
- ◆ Difficult
- 🏂 Cross Country Ski Trails
- 👁️ Overlook
- 🚲 Bike Trails
- ♿ Handicap Accessible

#	Trail Name	Location	Length	See Legend	Description	Directions & Locations of Trailheads	Owner / Mgr
A1	Ancient Oak Trail	C2 Willsboro	2.5 mi loop	●	Trail thru forest, field, along wetland to forest with ancient oak trees. The Omkring Sumpen Trail adds a route that goes through woods on west side of wetland.	On Rt 22, 2.2 mi north of Essex	PL / CATS
A2	Art Farm Trail	B2 Essex	1.5 mi RT	●	Goes thru field, woods & field by a pond. Connects to Field & Forest Trail	On Sayre Rd, 0.6 mi north of Lewis-Wadhams Rd	PL / CATS
A3	Ausable Marsh Trail	B1 Peru	2.5 mi RT	●	Trail on old road above wetland to Ausable River with spur trail to lake. Good bird watching.	Take DEC dirt access lane just south of Bear Swamp Rd. Go ¼ mi to trailhead.	NYS
A4	Ausable Chasm Trails	B1 Chesterfield	0.5-5 mi	●	\$12-\$20 entry fee to hike along "Grand Canyon of the Adirondacks"	On Rt 9, 1 mi north of Keeseville	PL
A5	Ausable Chasm Bike Trails	B1 Chesterfield	many miles of trails	●	Numerous bike trails and loops on woods roads adjacent to the Ausable Chasm Campground	Access via Rt 373 just east of Rt 9	PL
A6	Anthony's Nose Trail	B4 Putnam	1.8 mi RT	■	Short climb to views of Lake George and Roger's Rock	On Schwerdtfeger Rd	LGIC
A7	Allen Hill Trails	A1 Peru	2-mi loop & 3-mi RT	●	Huckleberry Hill Trail (3 mi RT) is relatively easy walk up a ridge through forest to a rocky and fairly open summit with views. Bennett Hill Trail (2 mi loop) is a pleasant walk mostly on an old woods road around a scenic hill. Reverend York Trail (0.4 mi) connects the two trails.	From Rt 22B in Peru, go west on River Rd (Cy Rt 37) for 5 mi to Allen Hill Rd. Turn left. In 0.5 mi, turn right on Rod and Gun Club Road and go 1.2 mi.	Private / CATS
B1	Bald Peak Trail	A3 Elizabethtown	6 mi RT	■	Trail climbs thru forest, follows stream & climbs steeply to views	1.3 mi south of New Russia on west side of Rt 9	NYS & PL
B2	Bartlett Pond - McConley Rd Tr.	B3 Moriah/Westport	8 mi RT	●	Trail follows seasonal road thru "West Champlain Hills." Okay to go around gates	Moriah trailhead at end of Bartlett Pond Rd. McConley Rd trailhead west of Stevenson Rd	PL
B3	Beaver Bend Trail	C2 Essex	.5 mi	●	Short walk in field and riparian forest along Boquet River	On Angier Hill Rd, 0.8 mi south of Whallonsburg	CATS
B4	Beaver Flow Trail	C2 Essex	3 mi RT or loop	●	Beautiful trail thru forest with stream and cliff	On Cook Rd, 100 yds west of Leaning Rd	EF / CATS
B5	Belfry Mt Trail	B3 Moriah	.8 mi RT	●	Short hike to fire tower with views	On Dalton Hill Rd, 3 mi south of Lincoln Pond	PL / NYS
B6	Black Kettle Trail	C2 Essex	1.5 mi loop	■	Hike goes through woods, along up & down a rocky slope, crosses a stream, wetlands and fields	On Cook Rd, 100 yds west of Leaning Rd	EF & PL / CATS
B7	Blueberry Hill Trails	A2 Elizabethtown	many miles of trails	●	Thirty multi-use trails thru forest with two summits & views	On east side of Lords Rd, ¼ mi north of 9N	Elizabethtown
B8	Bobcat Trail	B2 Essex	2.75 mi RT	●	Trail mostly thru beautiful forest by beaver ponds; north part has meadow or forest route	North trailhead on Walker Rd, 1¼ mi west of Rt 22. South trailhead, end of Ferris Lane	EF & PL / CATS
B9	Boquet Mountain Trail	C2 Essex	5 mi RT	■	Trail goes between N. & S. Boquet Mts. Traverses S. Boquet Mt east slope	South trailhead on Cook Rd 3/4 mi west of Leaning Rd. North trailhead on Jersey St (City Rt 12), 1½ mi west of Boquet River	EF & PL / CATS
B10	Boquet River Nature Preserve Trail	C2 Willsboro	Two 1.5 mi trails	♿	Tim's Trail is an accessible trail, open to bike use, that goes through upland forest on flatlands and along the ridge above Boquet River. It connects to the River Trail that showcases an old-growth floodplain forest with sycamore trees.	Tim's Trail - entry via Willsboro Hardware Parking Lot (3766 Main St.); Tim's Accessible Trail - entry at end of Library Street; River Trail entry at end of Gilliland St.	TNC
B11	Brookfield Headwaters Trail	B2 Essex	0.8 mi loop	●	Trail thru forest & by beaver ponds (no dogs)	On Reynolds Rd, 0.4 mi west of Brookfield Rd	NWT / CATS
B12	Bear Pond Trail	A4 Ticonderoga	4.5 mi loop	●	Trail through woods to ponds	Access from Rock Pond Trail (R5) and Clear Pond Trail (C11)	NYS
B13	Berrymill Pond Trail	A4 Ti/Hague	11 mi loop	■	Trail through woods along and to ponds	Access from New Hague Road in south and Putnam Campground in north	NYS
B14	Bass Lake Trail	A3 North Hudson	3.2 mi RT	●	Nice trail through woods to lake	On Ensign Pond Rd just east of Rt 9	NYS
B15	Buck Hill Road	A1 Black Brook	9 mi RT	■	A well-graded, little-trafficked dirt road between remote parts of Ausable and Peru.	North trailhead at Mitchell Rd "seasonal road" sign. South trailhead at Buck Hill Rd "Pavement Ends" sign. Park well off the shoulder of road.	Towns of Peru & Ausable
B16	Broughton Ledges Trail	A3 Moriah	6 mil RT	◆	Switchback trail up mountain with occasional views; then hike on old mountain road with views of Broughton Ledges; loop back to switchback trail to trailhead	From east: At intersection of Windy Hill Rd and Ensign Pond Rd, go west on Ensign Pond Rd for 2.3 miles. From west: At NYS Rt 9, go east on Casa Turn Rd about 0.2 mi to Ensign Pond Rd. Go east on Ensign Pond Rd for 7.5 mi	EF / CATS
C1	Champlain Bridge Trail	C3 Crown Point	1 mi RT	♿	Bridge connects New York and Vermont. Great views	From Rt 22/9N, take Bridge Rd (185) 3.7 miles to bridge.	NYS & Vermont
C2	Challis Pond Trail	A3 N. Hudson	1.2 mi RT	●	Short hike thru forest to pond	0.1 mi west of Hammond & Bloody Pond Trail (H1)	NYS
C3	Clintonville Pine Barrens	A1 Ausable	0.9 miles	●	Level marked trail loop through pine-blueberry habitat in this 900-acre nature preserve.	From Ausable Forks, go north 3 miles on Golf Course Rd. Turn rt on Dry Bridge Rd, then left on Buck Hill Road. Trailhead 0.3 mi on left.	TNC
C4	Cheney Mountain Trail	B3 Moriah	1.5 mi RT	■	Short uphill hike to three scenic overlooks. See the "perched" wetlands on summit.	On Pellershire Rd, 1.6 mi west of Rt 22/9N	Moriah / CATS
C5	Coon Mountain Trails	C2 Westport	2 mi RT	■	Summit Trail follows old road, climbs staircase to fabulous view. Hidden Valley Trail leads thru nice forest along rock ledges and creek to Summit Trail.	On Halds Rd, ¼ mi west of Lakeshore Rd	ALT
C6	Coot Hill/Big Hollow Trail	B3 Moriah	1-3 mi RT	■	Walk, drive, or ski on Lang Rd to cemetery, turn left for 1/2 mile hike to amazing views	Take Lang Rd (rough) 1 mi & park by brook or continue .5 mi to cemetery	PL / CATS
C7	Crowfoot Pond Trail	B4 Moriah	5 mi RT	●	Follows old woods road through forest along Crowfoot Brook to Crowfoot Pond	On Tracy Rd, 1.6 miles east of Rt 9	NYS
C8	Crown Point Historic Site	C3 Crown Point	0.8 mi RT	♿	Fascinating old fort with Lake Champlain views. Across road is an obelisk with a Rodin sculpture	1/4 mi south of Champlain Bridge on Bridge Rd (185)	NYS
C9	Cook Mountain Trail	B4 Ticonderoga	2.6 mi RT	◆	Trail through forest up steep hill to views of Lake George	On Baldwin Rd, 1.5 mi south of Alexandria Street	LGIC
C10	Crane Pond Road Trail	A4 Schroon	4 mi RT	●	Multi-use trail through woods to pond; could be rough due to vehicles	Rt 9 to Alder Meadow Rd to Crane Pond Road	NYS
C11	Clear Pond Trail	A4 Ticonderoga	5.8 mi RT from campground	■	Trail around Clear Pond	Trail accessed from Trail #s R5, G2, B12	NYS
C12	Crab Pond Trail	A4 Schroon	2.8 mi RT	●	Trail along Mill Brook to Crab Pond	Trail accessed from Pharoah Lake Trail (P7)	NYS
C13	Connector Trail	B4 Putnam	1 mi	■	Trail with yellow markers that connects Gull Bay Trail and Last Great Shoreline Trail	Access from either Last Great Shoreline Trail (L6) or Gull Bay Trail (G3)	LGIC
C14	Cobble Hill Bike Trails	A2 Elizabethtown	several miles	🚲	Mountain bike trails through forest and hills above and by golf course	On Rt. 9N 0.6 mi and 1.1 mi west of Court St.	
D1	Dacy Meadow Farm Trail	B2 Westport	2-4 mi loop	●	Trail thru field, passes over stream & wetland, goes uphill thru forest	2.4 mi west of Westport on Rt 9N & 1.7 mi east of I-87 Exit 31.	PL
E1	Eagle Mountain Preserve - Benny's Trail	A2 Chesterfield	5 RT	●	Trail on access road through wilderness forest to pristine Clear Pond then circles the pond and returns to trailhead. Caution - Beaver Pond floods trail.	From NYS Rt 9 and Trout Pond Rd, go northwest on Trout Pond Rd 3.2 miles.	NWT
E2	Essex Gateway Trail	C2 Essex	1.2 mi to Blockhouse Rd 3 mi RT	●	Walk north on sidewalk from Ferry parking area to nice forest leading and through productive farmland to Blockhouse Rd. Turn right on Blockhouse Rd to return to Essex.	From Essex Ferry Parking area, go north on sidewalk along Essex Road 0.2 miles to entry through fence to forest trail	PL
E3	Essex Quarry Trails	C2 Essex	0.4 miles to 1.5 miles of trails	●	Shortest trail, the Bluestone Trail, is around the historic quarry; other trails go west and north through quarry forestlands	On Lakeshore Rd 0.5 mi south of blinking light in Essex; For hike showing local uses of the quarry's stones, park at Ferry Parking Area; walk south thru Essex on Lakeshore Rd 0.5 mi.	CATS
F1	Field & Forest Trail	B2 Westport/Essex	2.7 mi one way or 2.4 mi loop	●	Goes thru forests, fields, over old beaver dam, valley views, creeks, wetlands	½ mi north of Wadhams on Cty Rt 10. Also accessed from Art Farm Trail, Bobcat Trail, Long Valley Trail, and Wadhams Lookout Trail (A2, B8, L2 & W1)	PL / CATS
F2	Florence Hathaway Park Trail	C2 Willsboro	1 mi loop	●	Trail thru hardwood & pine forests with seasonally wet areas. Leads to Sophies Lair Trail	On Rt 22, 1.1 mi south of bridge over Boquet River in Willsboro or 3.5 mi North of blinking light in Essex.	Willsboro
F4	Foothill Trail	C2 Essex	2 mi RT	●	Goes along edge of farmfield, climbs steeply, meets Rocky Ledges Trail, goes left to Boquet Mountain trail, loop back via Rocky Ledges Trail	Same as Rocky Ledges Trail (R3)	EF & PL / CATS
F5	Flying Squirrel Trail	B2 Westport	2 mi RT, 3 mi loop via W4	●	Trail through old woods below cliff, connects to W4 loop trail	Across road from Split Road Wild Forest (S2)	EF, CATS & PL / CATS
G1	Goose Pond Trail	A4 Schroon	1.2 mi RT	●	Trail through woods to pond	Accessed from Crane Pond Trail (C10)	NYS
G2	Grizzle Ocean Trail	A4 Ti/Schroon	10.2 mi RT	●	Trail through woods by ponds to Pharoah Lake Loop Trail	Accessed from Putnam Lake Campground	NYS
G3	Gull Bay Trails	B4 Putnam	3.5 mi	■	Trail loop with different colored trail markings that go to view, by a lake, and near vernal ponds. Use Connector Trail (C13) to get to Last Great Shoreline Trail	From Rt. 22, go west on Glenburnie Rd for 1.5 mi. Turn left on Warrick Rd and go 0.8 mi to parking area on the right. Don't park along the road.	LGIC
H1	Hammond & Bloody Pond Trail	A3 N. Hudson	1.6 or 3.8 mi RT	●	Follows stream thru forest. At fork, left to Hammond Pond (1.6 mi RT); right to Bloody Pond (3.8 mi RT).	On Ensign Pond Rd (Rt 4), 2.6 mi east of Rt 9 & 6.5 mi west of Windy Hills Rd	NYS
H2	Hemlock Hill Trail	B2 Westport	1 mi loop	●	Trail passes through forest by rock ledges to hemlock forest, and makes a loop by connecting to Vialls Crossing Trail	On Sherman Rd, ½ mi north of Lakeshore Road	PL / CATS
H3	Hidden Quarry Trail	B3 Westport	0.8 mi loop	●	Trail thru field & forest to old rock quarry with cliff above small pond	On east side of Rt 22/9N, 4.5 miles south of Westport or 5.5 miles north of Port Henry	PL / CATS
H4	High Point Trail	C1 Willsboro	2.4 mi RT	●	Pleasant hike thru pretty forest to high point on Willsboro Point	On Point Rd, 0.6 mi north of Frisbie Road	PL / CATS
H5	Homestead Trail	B2 Essex	2.5 mi RT or loop	●	Trail on old road thru forest.	On Cook Rd, ¼ mi west of Leaning Road	EF & PL / CATS
L1	Lee Park Trail	B2 Westport	0.75 mi RT	●	Go upstream to footbridge over little waterfall, cross bridge for walk in woods along stream	In Lee Park at bottom of Washington Street	Westport/ CATS
L2	Long Valley Trail	B2 Westport/Essex	1.25 mi one way	●	From south & north, trail begins in woods that lead to field in a long valley; northern forest is called "Pine Hill"	South access via Field & Forest Trailhead on Lewis-Wadhams Rd (Rt 10); North access on Sayre Rd 0.15 mi north of Lewis-Wadhams Rd	PL / CATS

#	Trail Name	Location	Length	See Legend	Description	Directions & Locations of Trailheads	Owner / Mgr
L3	LaChute River Walk Trail	C4 Ticonderoga	3 mi one way	●	Trail along river through Ticonderoga	Access trail in Bicentennial Park in Ticonderoga	Ticonderoga
L4	Long Swing Trail	A4 Schroon	5.2 mi RT	■	Trail through woods and along pond	On Rt 74 5 mi east of Rt 9 (43.8792°N, 73.6806°W)	NYS
L5	Lost Pond Trail	B4 Ticonderoga	2.8 mi RT	●	Trail through woods to pond	Accessed from Putts Pond Trail	NYS
L6	Last Great Shoreline Trail	B4 Putnam	3 mi	■	Trail through forest with scenic vistas and dock on Lake George. Boaters can access trail from the dock.	From Rt. 22, go west on Gull Bay Rd for 1.9 mi. Turn right on Sagamore Road and go 0.6 mi to parking area.	LGIC
L7	Little Ausable River Trail	B1 Peru	3.6 mi RT	♿	A flat gravel and paved trail along Little Ausable River; near Peru are interpretive signs about human and natural history.	North access from Sullivan Park on Rt 22. South access from Mason Hill Road.	Town of Peru
L8	Loneley Hill Trail	B2 Lewis	1.5 mi	●	Relatively level trail through mostly conifer forest in low area near McCrea Swamp; it has a small hill that seems to rise out of nowhere	West trailhead on east side of Redmond Rd just north of Wadhams-Lewis Rd (Rt. 10); East trailhead on Hyde Rd 0.2 mi east of Wadhams-Lewis Rd	PL / CATS
L9	Long Pond Trails	B1 Willsboro	3.5 mi RT	●	Follows woods road through forest, passing a "drowned forest" wetland. Continues through woods to Long Pond's western shore where it continues on a sometimes stony path along a small rise above the shoreline. Makes loop and returns on same route with option of taking the 0.5 mi "Spring Trail."	On Carver Road about 0.7 mi west of NYS Rt. 22	CATS
M1	McAuliffe Rd Trail	C2 Essex/Willsboro	3 mi RT	●	Trail on old road thru forest above Boquet River	North trailhead at junction of Sunset Rd & McAuliffe Rd south trailhead at junction of Leaning Rd & Jersey St	Essex & Willsboro / CATS
M2	McConley Spring Trail	B3 Moriah	0.8 mi loop	●	Pleasant trail in woods with small hills	On Tracy Rd just northwest of Witherbee	Moriah
M3	Moose Mountain Pond Trail	A3 Schroon	6.4 mi RT	●	2.7 mi RT to Bass Lake trail, 6.4 mi RT to Moose Mt Pond	Same as Hammond & Bloody Pond Trail (H1)	NYS
M4	Mountain Spring Rd Trail	B3 Westport	8-12 mi RT	●	Trail follows seasonal road thru "West Champlain Hills"	Westport trailhead at junction with Stevenson Rd. Moriah trailhead at junction with Bartlett Pond Rd	Westport & Moriah
M5	Mt Gilligan Trail	A3 Elizabethtown	3 mi RT	◆	Trail starts flat, goes up steep, rocky slope to views of Dix Range & Bald Peak	2.5 mi south of New Russia on Rt 9, turn east on Scrivner Rd to parking lot	PL / CATS
M6	Mt Defiance Road/Trail	C4 Ticonderoga	2 mi RT	●	Hike, bike or drive on road to summit with great view	From 9N, left on Montcalm St to Champlain Ave, Rt to Defiance St; pay toll if driving	FT
M7	Mud Pond/Old Military Pond Trail	A1 Black Brook	6.8 mi RT	●	A rough, out-and-back mostly level dirt road to a major wetland complex	Access off of Patent Road, Peru; park where pavement ends	NYS & PL
N1	Noblewood Park Trail	C2 Willsboro	1 mi RT	●	Trail to Lake Champlain & Boquet River delta	On Rt 22, 1.3 mi south of bridge over Boquet River in Willsboro or 3.3 mi north of blinking light in Essex.	Willsboro
N2	North Boquet Summit Trail	C2 Essex	3 mi RT from Leaning Rd	■	From Leaning Road, hike up and through a steep forest with spectacular views of valley and then of high peaks. Return on same trail or Rocky Ledges Trail. Can loop with Boquet Mt. Trail	Access via Rocky Ledges Trail or Boquet Mt Trail	PL / CATS
O1	Otis Mt Bike Trails	A2 Elizabethtown		🚲	Series of fabulous mountain bike trails	Trails at end of Lobdell Lane	PL
P1	Pauline Murdock Wildlife Trail	A2 Elizabethtown	1 mi RT	●	Climbs into forest with rich birdlife	On Elizabethtown-Wadhams Rd, 0.3 mi north of Boquet River	NYS
P2	Penfield Pond Trail	B4 Crown Point	1 mi RT or loop	●	Cross brook, turn right on trail into woods, climb hill, go along pond and into woods, return via old road	On Peasley Rd, 0.2 mi east of Penfield Museum	Penfield Museum / CATS
P3	Poke-O-Moonshine Observers' Tr.	B2 Chesterfield	5 mi RT	■	Trail through beautiful forests. Easier, longer than P4.	On Rt 9, 4 mi south of I-87 Exit 33	NYS
P4	Poke-O-Moonshine Ranger Trail	B1 Chesterfield	2.4 mi RT	◆	Steep trail. Summit features fire tower & panoramic views	On Rt 9, 2.8 mi south of I-87 Exit 33	NYS
P5	Putts Creek Trail	C3 Crown Point	1.5 mi RT	●	Trail overlooking marsh along Putnam Creek, good birdwatching	At end of Wolcott Rd, 0.4 mi west of Lake Rd	NYS
P6	Pharoah Mt. Trail	A4 Schroon	5.8 mi RT	◆	Hike through woods to mountain top	Accessed from other trails; look at map	NYS
P7	Pharoah Lake Trail	A4 Schroon	7.6 mi RT	●	Nice woods trail to lake	Accessed from other trails; look at map	NYS
P8	Peaked Hill and Pond Trail	A4 Schroon	3.7 mi RT	◆	Canoe across Paradox Lake to trail through woods, by pond, to steep hill	Accessed via canoe from Paradox Lake Campground	NYS
R1	Rattlesnake Mt Trail	B1 Willsboro	3.2 mi RT	◆	Trail follows old road then climbs steeply to summit with views	On Rt 22, 5 mi south of I-87 Exit 33 or 3 mi north of Willsboro	PL / CATS
R2	Riverside Trail	C2 Willsboro	1.2 mi loop	●	Trail thru field to creek, then along Boquet River and back thru field	On Mountain View Dr, 1.5 mi south of Rt. 22 in Willsboro	PL / CATS
R3	Rocky Ledges Trail	C2 Essex	2 mi RT	■	Trail thru forest by rock outcrops; leads to North Boquet Summit Trail. Makes loop trail via Boquet Mt Trail and Foothill Trail	Park at junction of Leaning Rd and Jersey Street, walk 100 ft south on Leaning Rd to trail	EF & PL / CATS
R4	Round Pond Trail	A3 Moriah	7.8 mi RT	●	Trail climbs from east to Round Pond, goes along East Mill Brook & follows Schroon River	East trailhead on Ensign Pond Rd, 3.5 mi west of Windy Hill Rd. West trailhead by DEC campground on Rt 9	NYS
R5	Rock Pond Trail	A4 Ticonderoga	1.9 mi RT	●	Wooded trail to and around Rock Pond	Accessed from other trails; look at map	NYS
R6	Rogers Rock	B4 Hague	3.5 mi RT	◆	Trail through forest to and along ridge and cliffs above Lake George. Trail is reportedly not marked well.	Rogers Rock Campground, 9894 Lake Shore, Hague	NYS
S1	Sophie's Lair Trail	C2 Willsboro	3-7 mi loops	●	Passes over subtle hills, along wetlands, crosses small creeks	Same as Florence Hathaway Park Trail (F2)	PL / CATS
S2	Split Rock Wild Forest Trails	C2 Westport/Essex	2 to 6 mi loops	■	Trails overlooking Lake Champlain with wetlands, an old quarry, & hidden bays	On Lakeshore Rd, 5.8 mi south of Essex or 4.7 mi north of Westport	NYS
S3	Spring Mill Pond Trail	A4 Hague	12 mi RT	■	Trail through forest to Pharoah Lake Trail Loop	On New Hague Road	NYS
S4	Sucker Brook Trail	A4 Schroon	15 mi RT	●	Trail with hills to Pharoah Lake Trail	On Johnson Road	NYS
S5	Spectacle Pond Trail	A4 Schroon	3.4 mi RT	●	Trail goes by brook through forest to pond	On Adirondack Rd, 2.7 mi south of Alder Meadow Rd	NYS
S6	Short Swing Trail	A4 Schroon	5 mi RT	●	Trail thru woods by ponds	Accessed from other trails; look at map	NYS
S7	Spirit Sanctuary Trail	C2 Essex	1 mi RT 0.5 mi to Black Kettle Trail	●	Trail through old field and green cemetery and then forest to Black Kettle Trail	On Cook Rd, 1.3 mi west of Whallonsburg and 0.4 mi east of Leaning Rd.	EF / CATS
S8	Sherman Trail	C2 Westport	0.5 mi one-way	●	Trail through fields and woods that connects Sherman and Halds Roads. Provides connection of Viall's Crossing Trail and Coon Mountain Trail.	South trailhead (44.219545°N, 73.440339°W) on Sherman Rd, 1.6 mi north of Lakeshore Rd; North trailhead (44.223099°N, 73.432769°W) on Halds Rd 1.25 mi west of Lakeshore Rd.	Private / CATS
T1	Thrall Dam Park Trail	B2 Lewis	1-4 mi loops	●	Loop trails thru forest and along wetland, shared with bikes	On Rt 9, 0.7 mi south of Lewis and 3¼ mi north of Elizabethtown	EC & Lewis
T2	Three Creeks Trail	C2 Essex	1 mi one way	●	Features nice forest and creek crossings. Trail closed 9/15-12/15	From Bobcat North Trailhead, walk east on Walker Rd. 0.3 mi to trail on right; or access from Bobcat Trail	EF & PL / CATS
T3	Tubmill Marsh Trail	A4 Schroon	4.4 mi RT	●	Forested trail leading to many ponds	On Rt 74 about 9 mi east of Rt 9	NYS
T4	Treadway Mt. Trail	A4 Ticonderoga	7.8 mi RT	■	Trail to top of mountain with views	Accessed 0.4 mile north of Grizzle Ocean Trail (G5)	NYS
T5	Twin Valleys Trails	B2 Westport/Essex	5 mi	●	System of interconnected trails in valleys, along streams, through woods, and to two viewpoints.	Enter from West Valley Trail but on weekends, you can enter via Twin Valleys Road; if gate open, follow driveway 0.4 mi to parking area.	SUNY P'burgh / CATS
V1	Viall's Crossing Trails (includes John Brown Trail and Harold's Oak Grove Trail)	B2 Westport	5 mi RT or 5 mi loop	●	Starting from Westport Storage, trail gets onto an old RR bed before going uphill to connect to the other trails. Makes a 5 mi loop trail back to Westport. Rt 22 Trailhead has a 1.2 mi trail loop on west side of Rt 22 with John Brown Trail. East of Rt 22 is 1 mi trail loop with Harold's Oak Grove Trail. North trailhead leads to nice trail loops w/ Hemlock Hill & Harold's Oak Grove Trails	Main Trailhead on Rt 22 in woods west of RR tracks halfway between Westport and Wadhams; South trailhead across road from Westport Train Station; go through Westport Storage business to trailhead. North Trailhead on Sherman Rd, ¼ mi north of Lakeshore Rd.	PL / CATS
W1	Wadhams Lookout Trail	B2 Westport	0.3 mi	●	Walk thru field, turn left to lookout or continue straight to Field & Forest Trail	On Rt 22, 0.3 mi east of Wadhams; also enter from Field & Forest Trail	PL / CATS
W2	Webb Royce Swamp Trail	C2 Essex	.3 mi RT	♿	Short, flat gravel-paved trail will have an observation deck for watching birds	On Clark Rd, ¼ mi from Lakeshore Rd	NYS
W3	Wildway Overlook Trail	B2 Essex	1.5 mi RT	■	Fairly easy climb to spectacular view of Champlain Valley & Split Rock Wildway. Trail connects to junction of Boquet Mt. & Rocky Ledges Trails. WiFi transmitter at summit shows how technology infringes on the natural world.	On Brookfield Rd, ¼ mi south of Reynolds Rd	EF / CATS
W4	Wildway Passage Loop Trail	C2 Westport	1 mi loop	●	Goes thru open forest to rock overlook & by pretty stream	On Angier Hill Rd, 0.6 mi north of Lakeshore Rd	CATS & EF / CATS
W5	Woods & Swale Trail	B2 Westport	2 mi RT	●	Trail climbs thru old forest to pine plantation, skirts by a wet swale	South trailhead at Lakeshore & Sherman Rd; North trailhead go 3/4 mi north on Sherman Rd	PL / CATS
W6	Wickham Marsh Trails	B1 Chesterfield	2-6 mi	●	Series of trails through and above large wetland	Trailheads on Rt 373, Lake St, &	